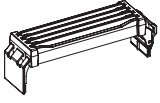


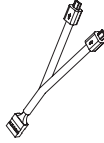
### Parts List



A x 1



B x 1



C x 1



D x 1



E x 1



F x 1



G x 1

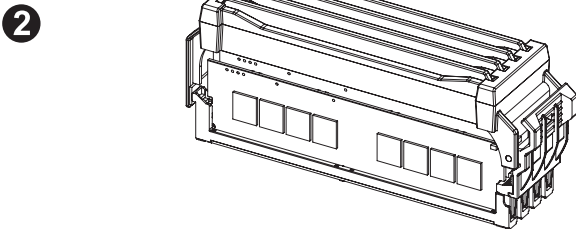
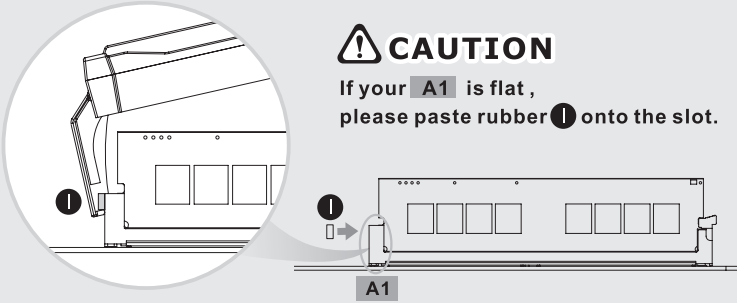
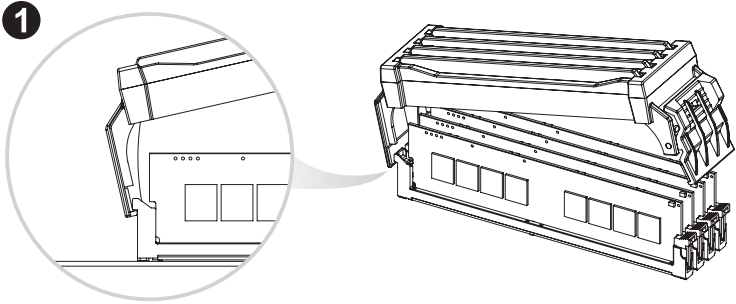


H x 1

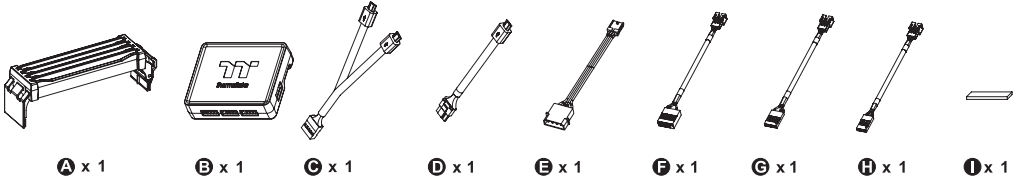


I x 1

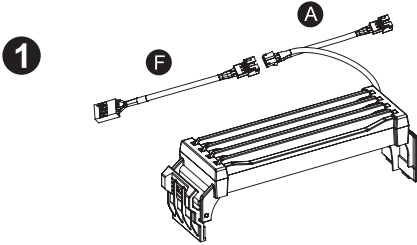
### Installation Guide



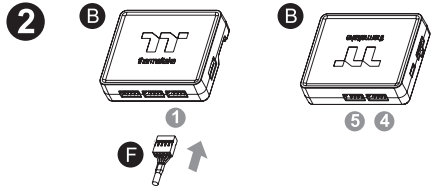
# Parts List



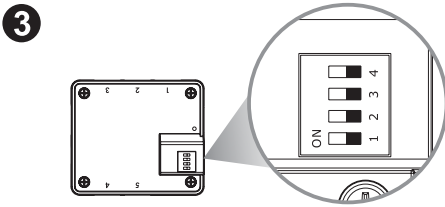
## Software Controller Installation Guide



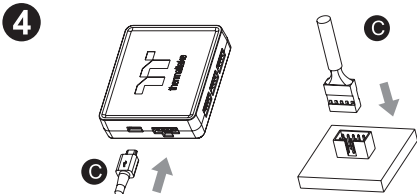
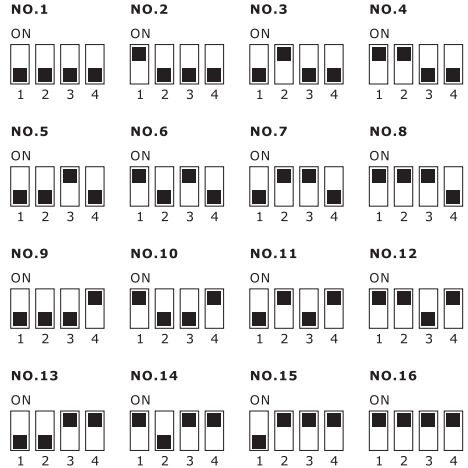
Connect the Software cable onto the DDR4 memory lighting kit.



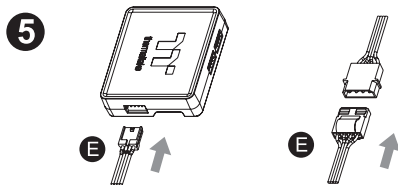
Connect the software cable onto the controller.



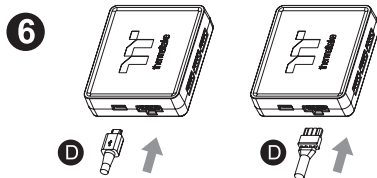
Set the DIP switch on the back side of the controller to assign the number of the controller



Connect the controller cable onto the mainboard (USB 2.0 9 pin) and controller.



Connect the power cable to the 4pin Molex connector and controller.



If you want to connect two or more controllers, you can use the bridge cable to connect the controllers.